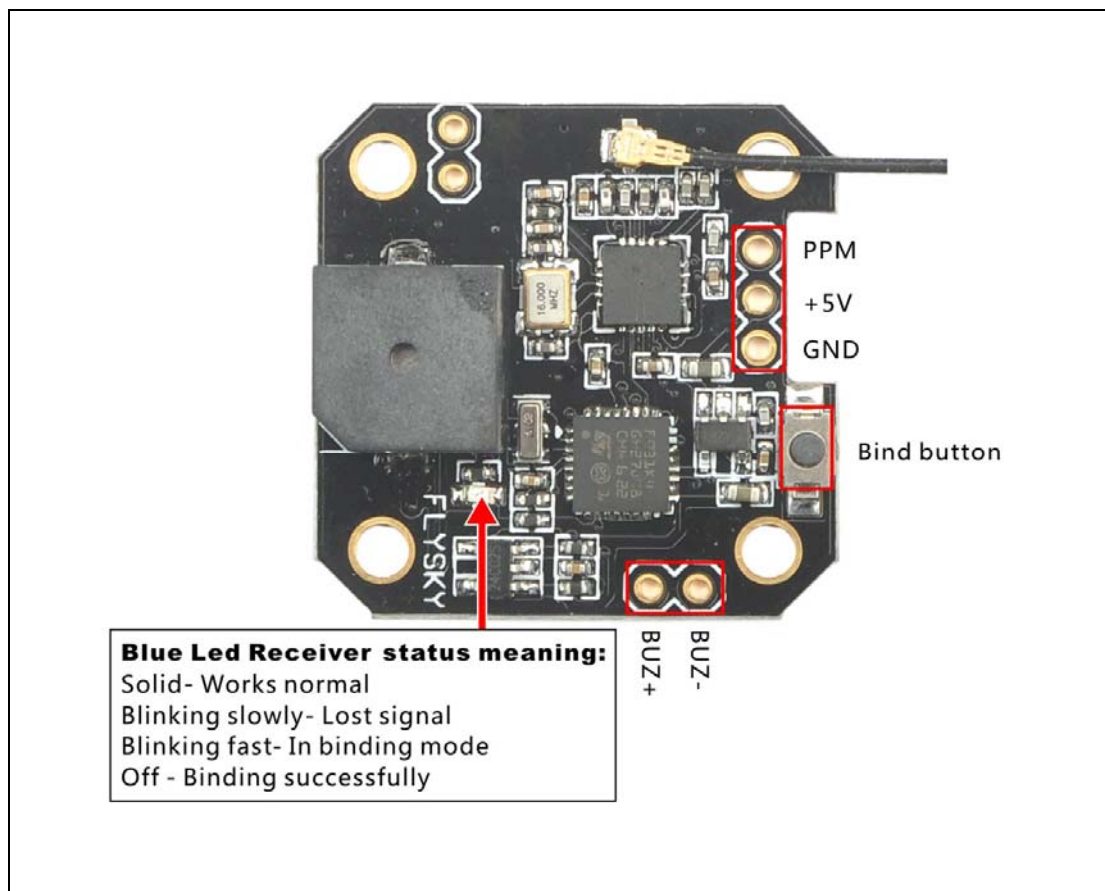


Specification:

- Brand Name: Eachine
- Item Name: Minicube Flysky receiver
- Channels: PPM 8CH
- Model type: Multi-rotor
- Frequency range: 2.408-2.475GHz
- 2.4GHz system: AFHDS 2A
- Work Mode: PPM
- Transfer method: FHSS
- Built-in Buzzer (Low voltage alarm) Configure by Betaflight configurator
- Antenna length: 100mm
- No ground interference (Transmitting and receiving 1 m from the ground): >300m
- Working current: 40mA
- Size: 27*27*7mm
- Weight: 3.1g
- Compatible Transmitter: Compatible with FS-i4, FS-i6, FS-i6S, FS-i6X, FS-i10, FS-GT2E, FS-GT2G, FS-GT2F

Pin-out diagram:



Bind procedure:

-Connect the battery to the receiver while holding the binding button on the board ,the Blue LED will blinking fast, this indicates the Receiver is in binding mode. Then release the binding button.

-Turn on your radio and Set receiver mode to AFHDS 2A, then get your radio into binding mode. The blue LED on the flight controller will turning off for a second and then starting to blinking slowly, this indicates binding successfully.